

LATITUDE | Z

Features Card



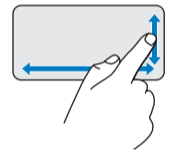
OK146NA01

Gesture-Enabled Touchpad

The Latitude Z touchpad supports multi-touch and single-touch gestures.

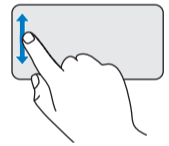
Single-Touch Gestures

Vertical and Horizontal Scroll



Allows you to scroll up/down and left/right by moving your finger along the vertical zone (at the extreme right) and horizontal zone (at the bottom) respectively on the touchpad.

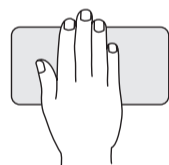
Single-finger zoom



Allows you to zoom in or zoom out of an active window by moving your finger upward or downward on the zoom zone (at the extreme left) on the touchpad.

Multi-Touch Gestures

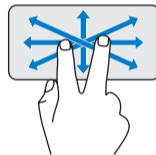
Privacy Mode



Keep prying eyes off your screen by briefly holding your hand in place anywhere on the touchpad.

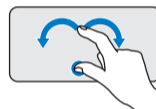
NOTE: Default setting is to minimize all screens. You can configure Privacy Mode through the Dell Touchpad window to turn the screen blank or lock the computer.

Finger Pan/Scroll



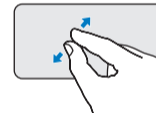
Allows you to move the focus on a object when the entire object is not visible. Move two fingers in the desired direction to pan-scroll the selected object.

Rotate

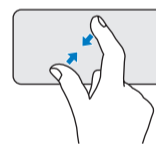


Allows you to rotate active content by 90 degrees. Keeping the thumb in place, move the index finger in an arced direction right or left to rotate the selected item 90 degrees clockwise or counterclockwise.

Zoom

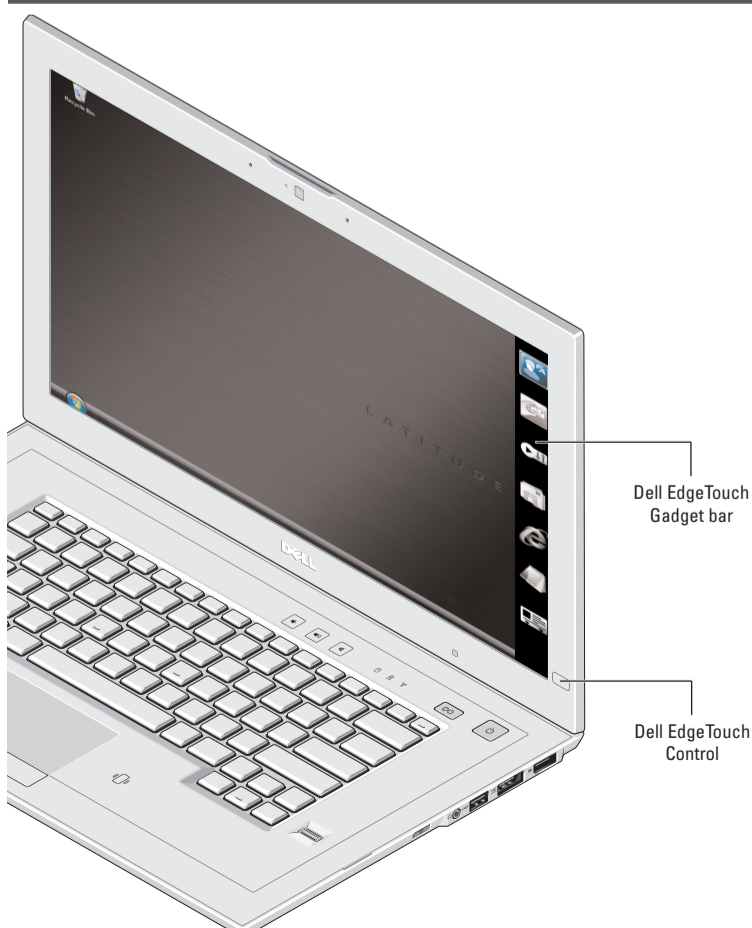


Allows you to increase or decrease the magnification of the screen content/object. Moving two fingers apart on the touchpad zooms in on the active window.



Moving two fingers closer together on the touchpad zooms out on the active window.

Dell™ EdgeTouch™ LCD Sensor



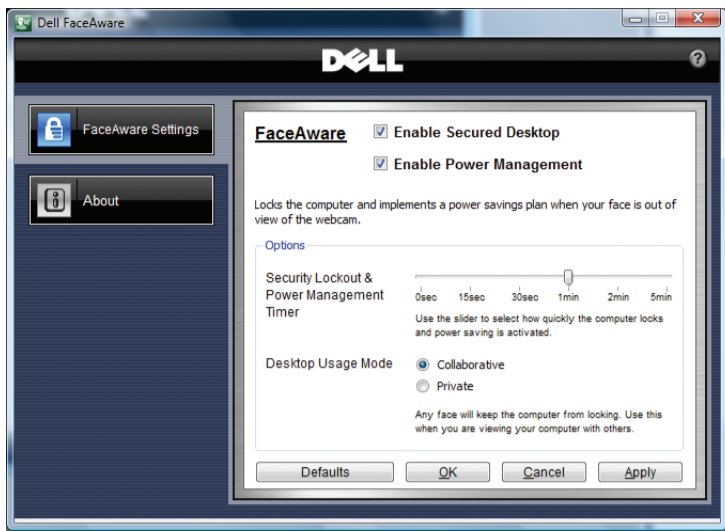
Dell EdgeTouch™ LCD Sensor is an intuitive input technology that works through an array of capacitive sensors installed beneath the right LCD frame of your Latitude Z. Using this technology, you can experience easy one-touch scrolling and quick system control through a customizable gadget bar.

- Press the Dell EdgeTouch Control at the lower right corner of your Latitude Z's LCD frame to launch the gadget bar.
- Touch the LCD frame next to the gadget-bar icon to launch individual applications, or slide your finger up and down the right LCD frame to adjust the computer volume or brightness.

When the gadget bar is inactive, slide your thumb up and down the right frame to scroll through long documents or web pages.

Dell FaceAware™ Lockout

Dell FaceAware



Dell FaceAware™ is a software application that works with the Latitude Z's optional webcam to give you access to advanced security and power-management features.

Dell FaceAware progressively learns to recognize your facial features to *sense* your presence or absence in front of the webcam.

Dell FaceAware scans for your presence in addition to keyboard and mouse activity. If you are not present, the computer will lock and activate Microsoft® Windows® power-saving features.

NOTE: Dell FaceAware will not automatically log you into your computer.

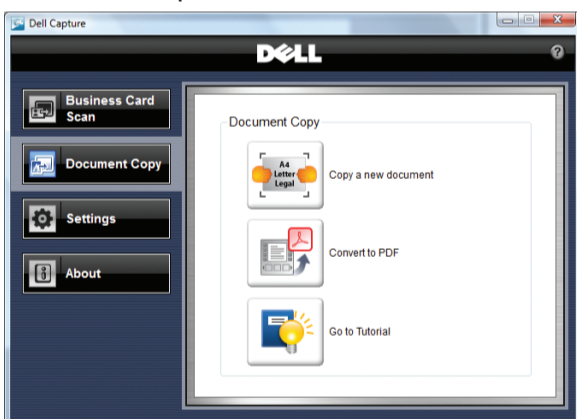
Dell FaceAware supports recognition of multiple faces in the collaboration mode.

Dell Capture

Dell Capture Business Card Reader



Dell Capture Document Scanner



Dell Capture software makes use of the Latitude Z's optional auto-focus webcam to help you digitize and organize important business information. Applications supported by the Dell Capture software are Dell Capture Business Card Reader and Dell Capture Document Scanner.

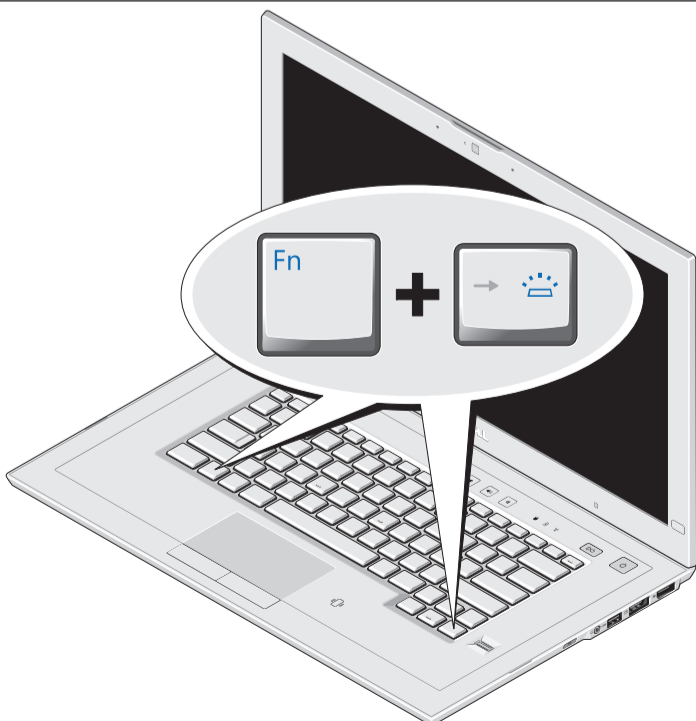
Dell Capture Business Card Reader allows you to auto-capture and import the content of business cards into common contact-management applications such as Microsoft Outlook®, Outlook Express, Excel®, and Salesforce.com.

Dell Capture Document Scanner allows you to scan documents such as certificates and contracts. Dell Capture can easily scan documents in A4, Letter, and Legal formats, in addition to auto-capturing a document image in PDF.

Dell Capture software lets you scan business cards in eight different languages, each of which has its own separate user interface in the program.

To start using the Dell Capture software, click **Start** → **All Programs** → **Dell Capture**.

Backlit Keyboard



The Latitude Z ships with a backlit keyboard that illuminates whenever keyboard or touchpad activity is detected in a darkened environment.

To enable or disable the keyboard backlight, simply press **<Fn><Right arrow>**. The keyboard LED icon will pop up on your screen if the Dell ControlPoint™ software is installed on your computer.